

RotoMetrics Dies and Support Tooling

Better Product Quality and Less Waste

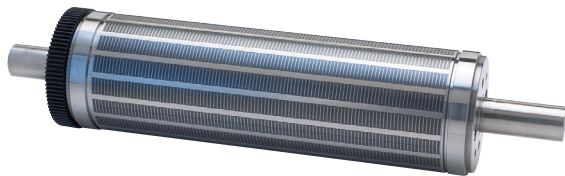
Flexible and Solid Dies Give You Better Quality End Product

From short to extremely long runs, simple patterns to complex, easy papers to challenging materials, we customize solutions to fit all applications while improving performance. Our customers are able to cut more materials, allowing them to pursue business opportunities that were previously unattainable due to constraints across the press and beyond.

Increased Line Speed

Reduced Waste

Increased Throughput

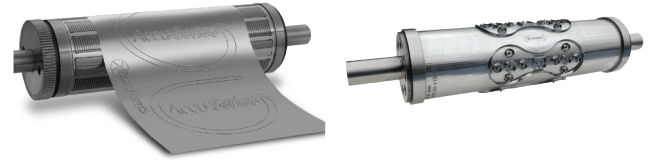


Engineered Tooling

Support tooling is critical to ensure RotoMetrics' die perform at their best. We have a complementary offering of anvils, magnetic cylinders, rolls and supporting services to ensure you maximize uptime and improve your press speed.

Support Tooling

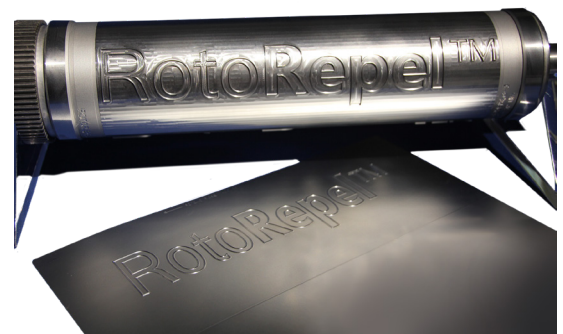
- Gears
- Specialty Flexible Dies for Folding Carton Applications
- Pressure Gauges
- Scoring/Slitting Products
- Rotary Pressure Cutting
- Inking Solutions
- Die Blocks



Solid and Flexible Dies

Our Rotary Dies are custom-manufactured and offer a specific solution for **ANY** application.

- Flexible Dies for paper, film, thin film, abrasive materials, digital applications
- Solid Dies for abrasive materials, long runs, metal to metal cutting and deep blade routing
- Many dies are available for same day or next day shipping
- Material Movement Solutions are available if you need parts, slugs, by product or waste removed from the substrate or the carrier so the press runs faster, longer and more efficiently
- Performance Coatings to increase press speed and optimize uptime. Including FDA compliant offerings



END-TO-END, WE SOLVE YOUR PROBLEMS FASTER!

Speak with a web-handling expert!

Call + 44(0)1922 610000 or email uk.sales@maxcessintl.com